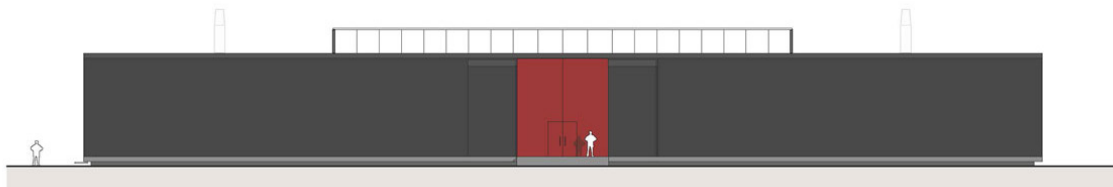


wind tunnel eindhoven university



project description
wind tunnel eindhoven university

client
eindhoven university of technology

project team
prof.dipl.-ing. christian rapp
ir. ruurd roorda
ir. gijs adriaansens

With the design of a new wind tunnel facility for the faculty of the Built Environment Eindhoven University of Technology puts a step forward in the realization of its ambitions, clearly pronounced and translated in the Masterplan TU/e Science Park (as developed by Bauhütte). The design builds on the core principles of OD205 (the office of campus architect Van Embden whom formulated the original urban plan of the campus) and therefore fits seamlessly in the urbanistic and architectural repertoire of the campus.

For the realisation of this building a steel loadbearing construction has been chosen, together with a facade of black masonry and red as a supporting primary colour (such as the large industrial door). Herewith the building becomes recognizable, and part of, the same 'architectonic family' as the other buildings within the campus repertoire. Apart from the wind tunnel the building also facilitates other additional roles such as being a physical repository for the server room of the university.